

Newly Listed
Luxury Homes for Rent

*Take the
high ground
in life.*





The art of living naturally.

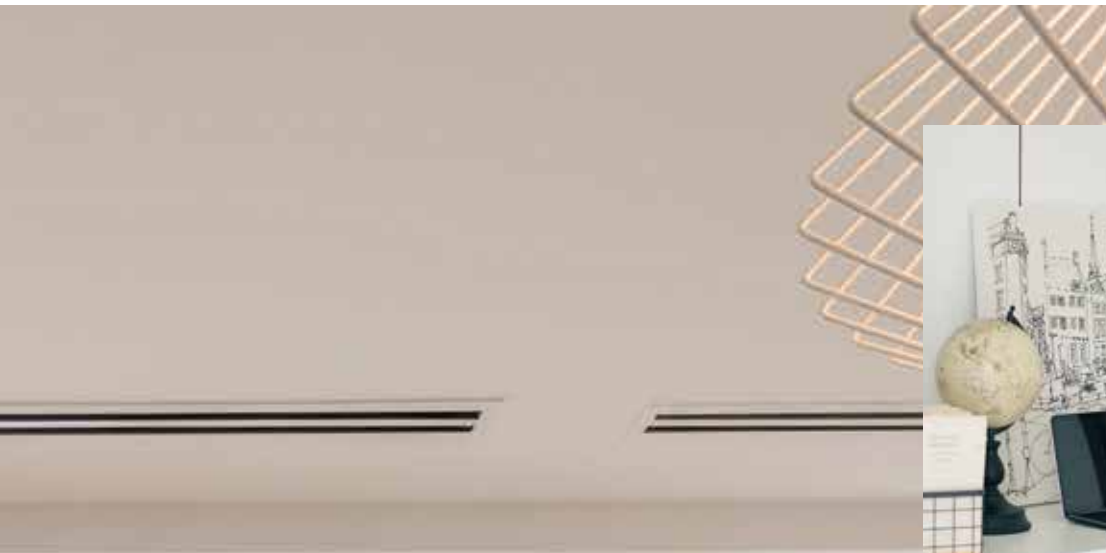


Dream Lofty Dreams

Move up to an active & healthy lifestyle where urban design thrives. Flourish in a natural environment within a well-established community in a fully-managed estate. Realise your dreams of living in international comfort and style at Yangon's best address.

*Where life
chooses to
live in style.*



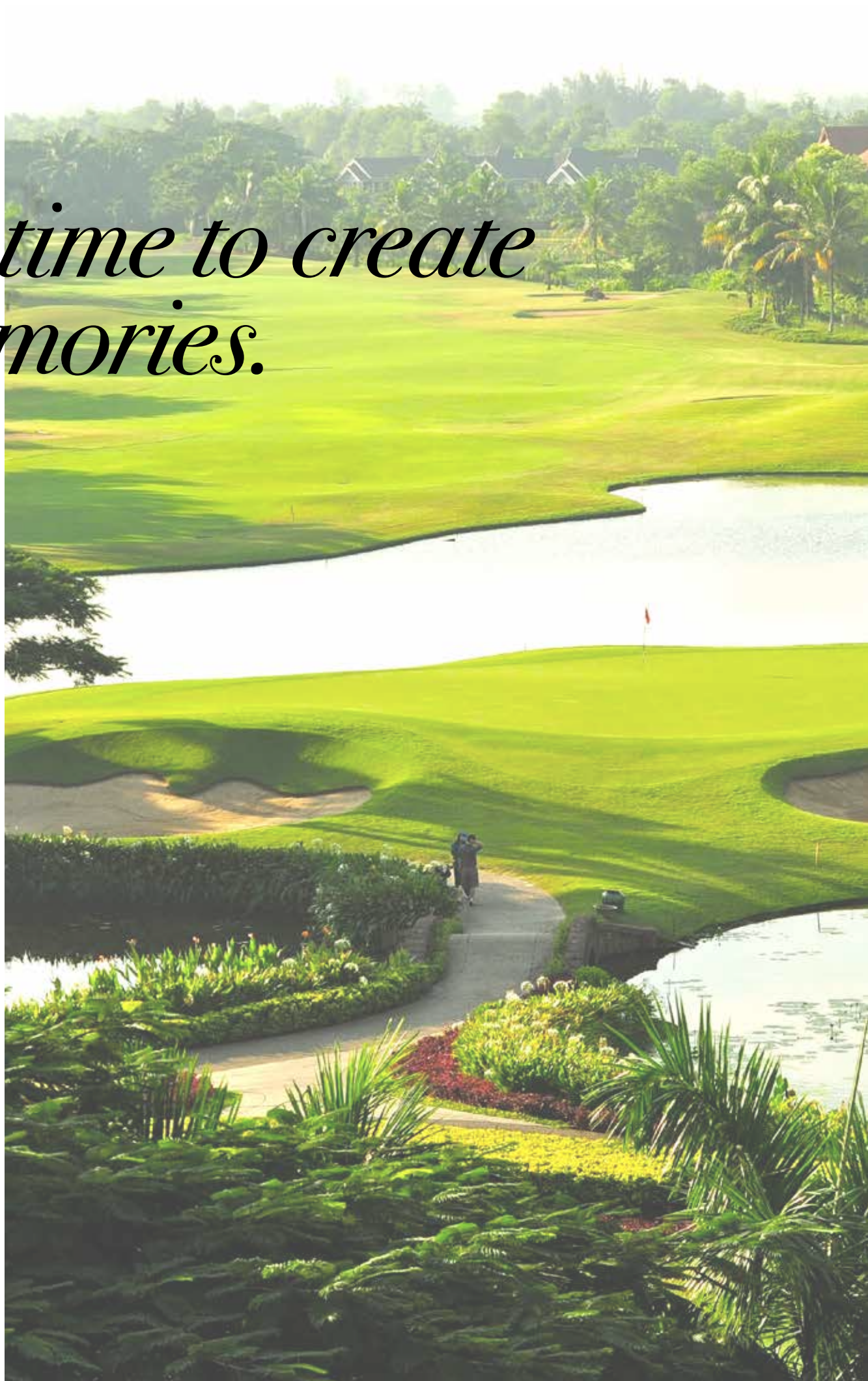


The Height of Refinement

Lotus Hill is a collection of stylish triplex villas set within a landscaped island surrounded by waterways and flowing canals.

Imagine the assurance and freedom of a landed property within a private island. This lush haven enjoys views of the lake and the country's most prestigious golf course.

*It's time to create
memories.*





Inspired to Reach Great Heights

Whether entertaining friends in style or simply teaching your kids how to swim, it is time to step up to a healthy life of joy, sports and leisure. Be inspired to live to the full and turn moments into memories that last forever.

Multi-use amenity centre.

Swimming pool with changing and shower facilities.

Covered children's playground.

Basketball / hard surface court.

Landscaped lake garden.

High quality roads and infrastructure.

24/7 power supply and clean water.

A woman with dark hair pulled back, smiling warmly and looking off to the side. She is holding two champagne flutes filled with bubbly liquid. The background is softly blurred, suggesting an indoor setting with warm lighting. The overall mood is celebratory and joyful.

*It's time to
take a step up
in life.*



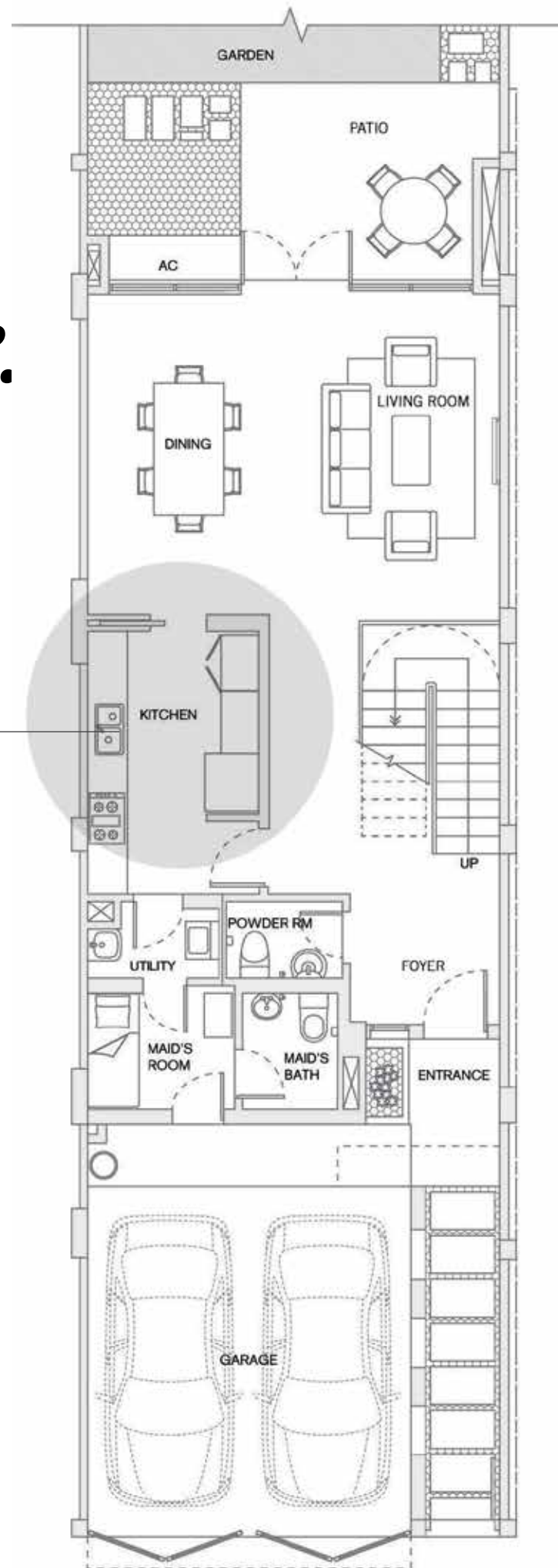
Make Friends in High Places

Vibrant Pun Hlaing Estate attracts a Myanmar crowd with worldly experience.

You can choose a quiet day in or exciting hours of golf, tennis, swimming and dining with your friendly neighbors.

Your kids can benefit from world-class education thanks to nearby Dulwich College.

*It's time to
make the
right choice.*



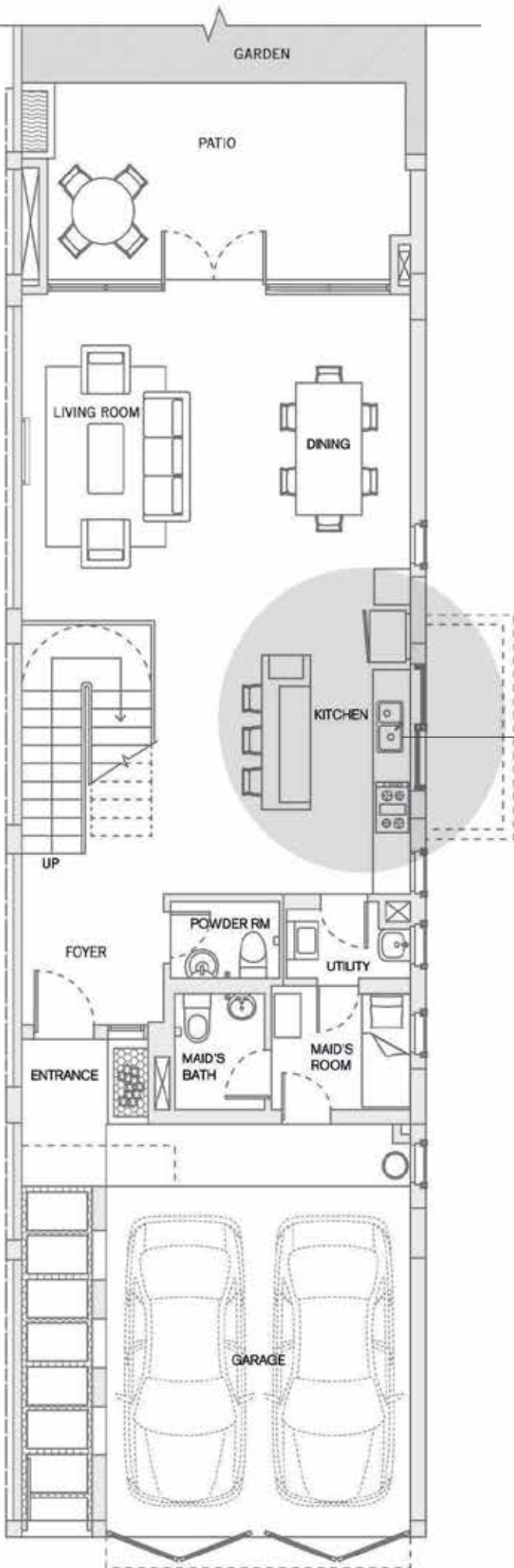
TRADITIONAL

A closed kitchen layout in the familiar style of traditional local homes.

GROUND FLOOR PLAN

Insisting on the Highest Standards

Lotus Hill triplex villas come with their own private gardens. Internationally inspired interior design provides a comfortable lifestyle. These 3 storey residences are incredibly spacious, bright and airy to suit your family's needs. There is also a choice of interior layouts from a more traditional configuration to a contemporary one.



CONTEMPORARY

A modern open kitchen layout inspired by international style homes.

GROUND FLOOR PLAN

DISCLAIMER

Floor plans, measurements and specifications are subject to change.

Start living your legacy.

Good taste lasts a lifetime

Creating a lovely home for you and your family to enjoy day in day out is what Lotus Hill was designed for. From inspired interiors to healthy and active environments, living at Lotus Hill is an experience to cherish.





LUSCIOUS

Lead a contemporary, active & healthy lifestyle in a fresh, natural environment.

GORGEOUS

Reside in a well established, fully-managed and beautifully maintained estate.

VIVACIOUS

Enjoy lifestyle amenities, sporting facilities, enrichment activities and recreational events.

PRESTIGIOUS

Live within an influential community of individuals and active families.

PRECIOUS

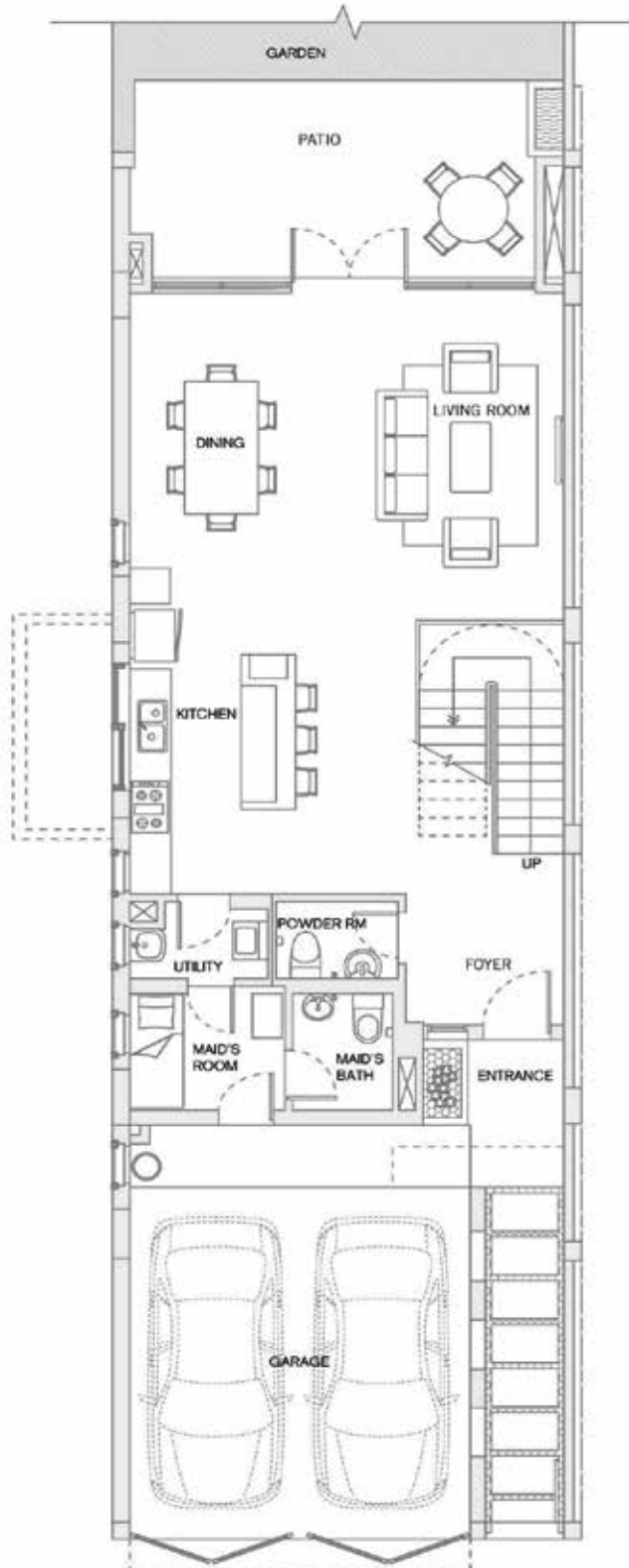
Give your children Yangon's best international education at Dulwich College.

SPACIOUS

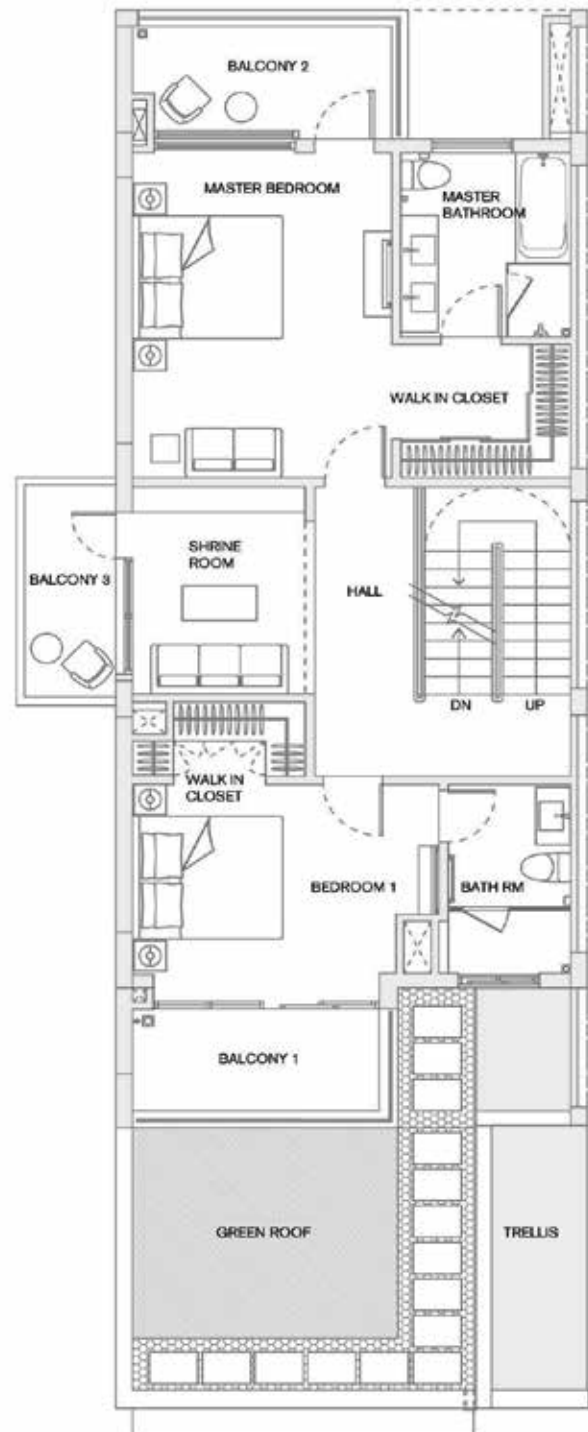
Love living in a well-designed and stylish space with generous interiors.

End Unit - Left

Total Floor Area
4747 sq ft



Ground Floor Plan
With Open Kitchen



First Floor Plan

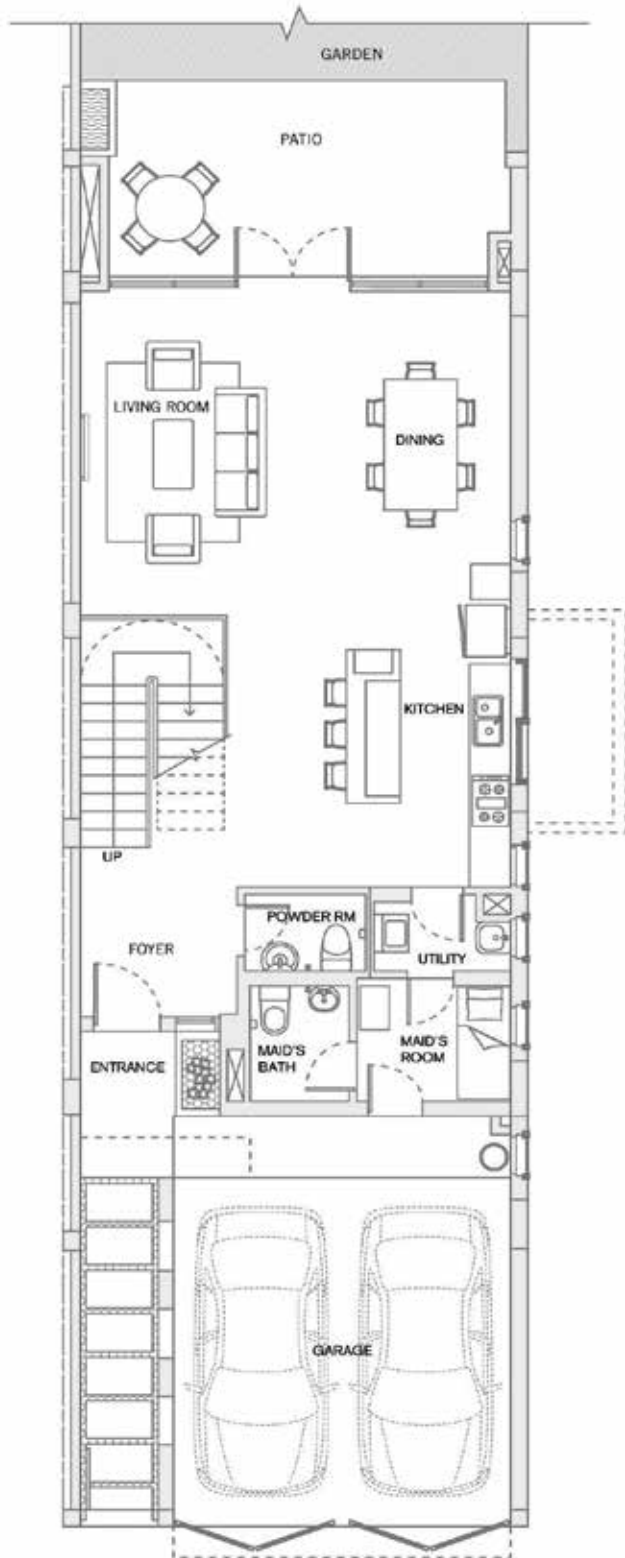


Roof Terrace

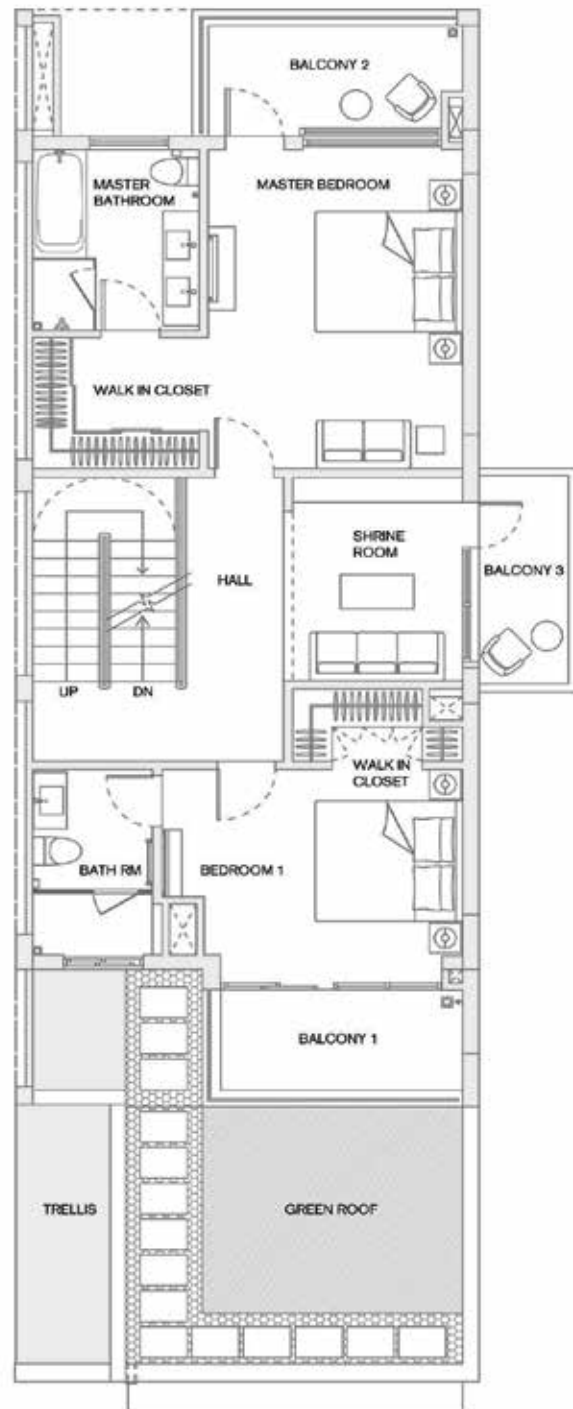
Second Floor Plan

End Unit - Right

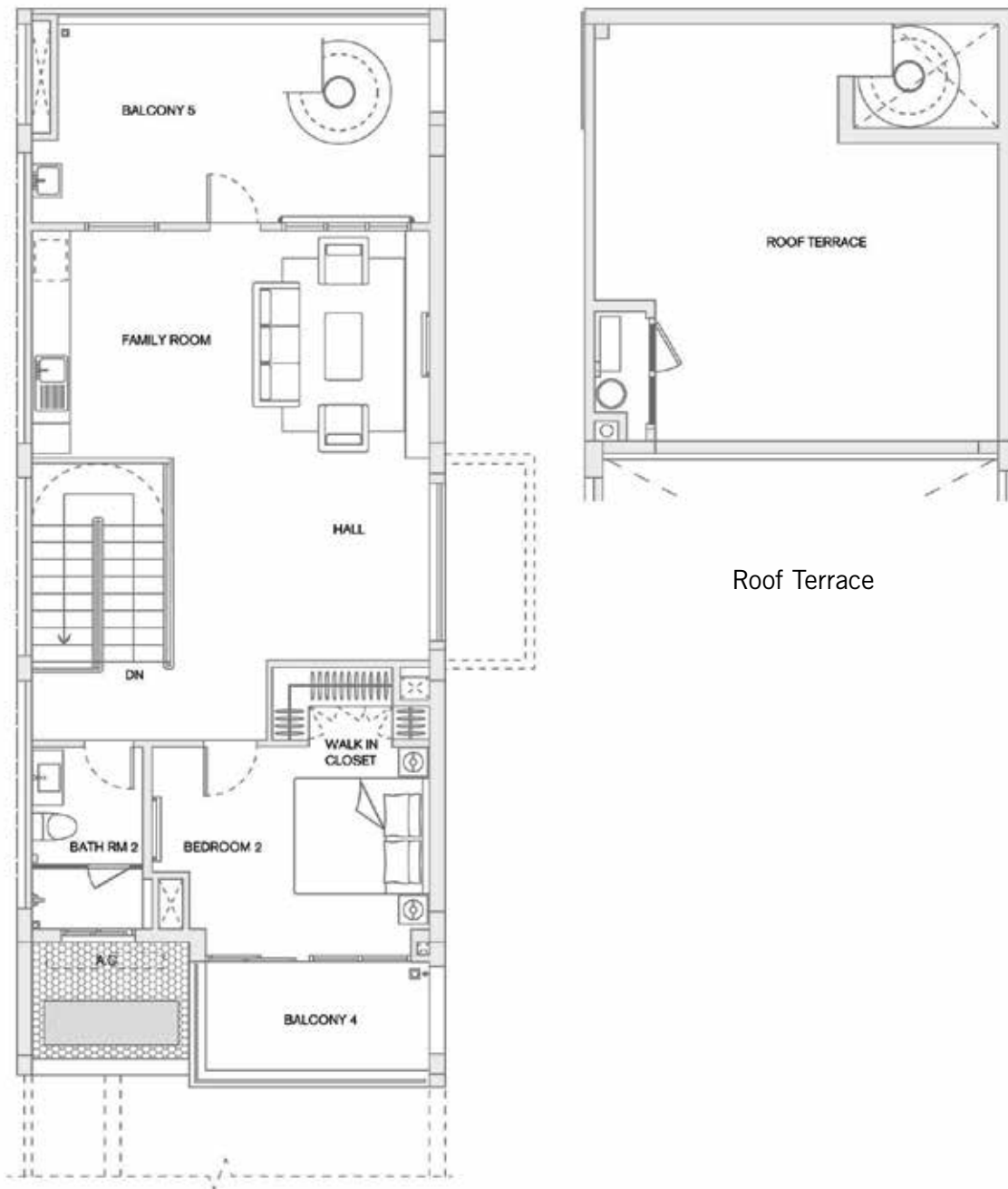
Total Floor Area
4747 sq ft



Ground Floor Plan
With Open Kitchen



First Floor Plan

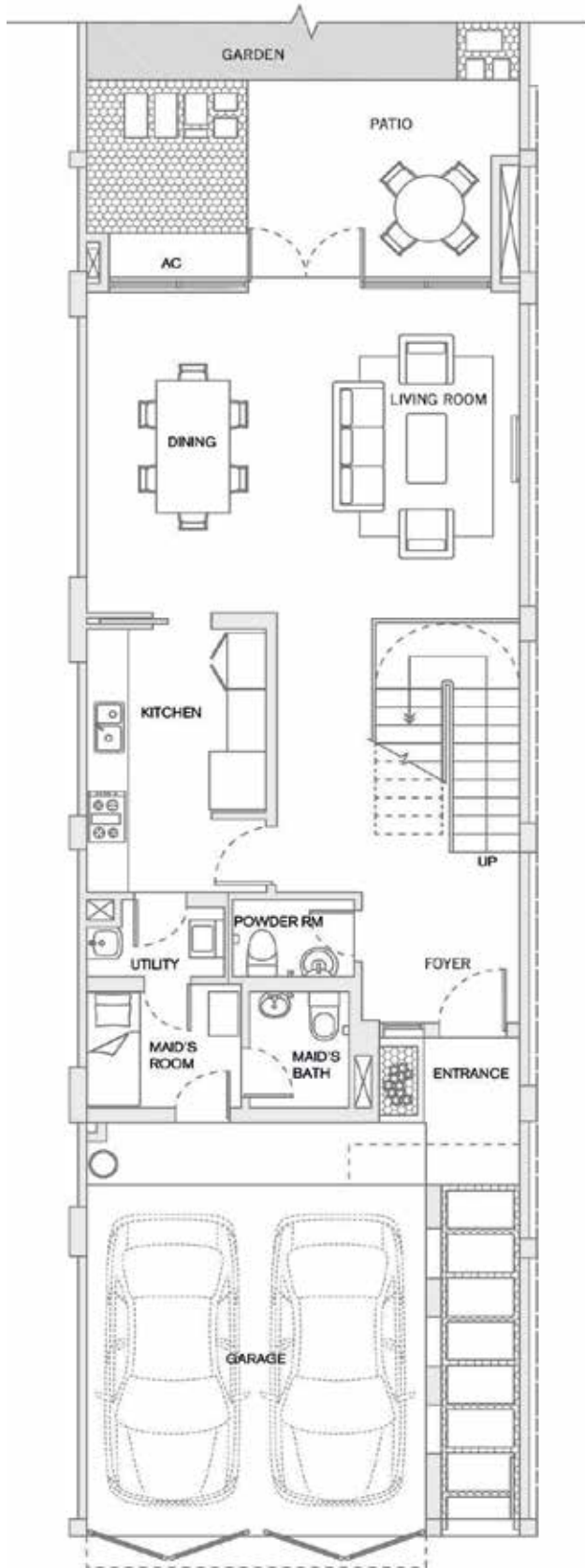


Second Floor Plan

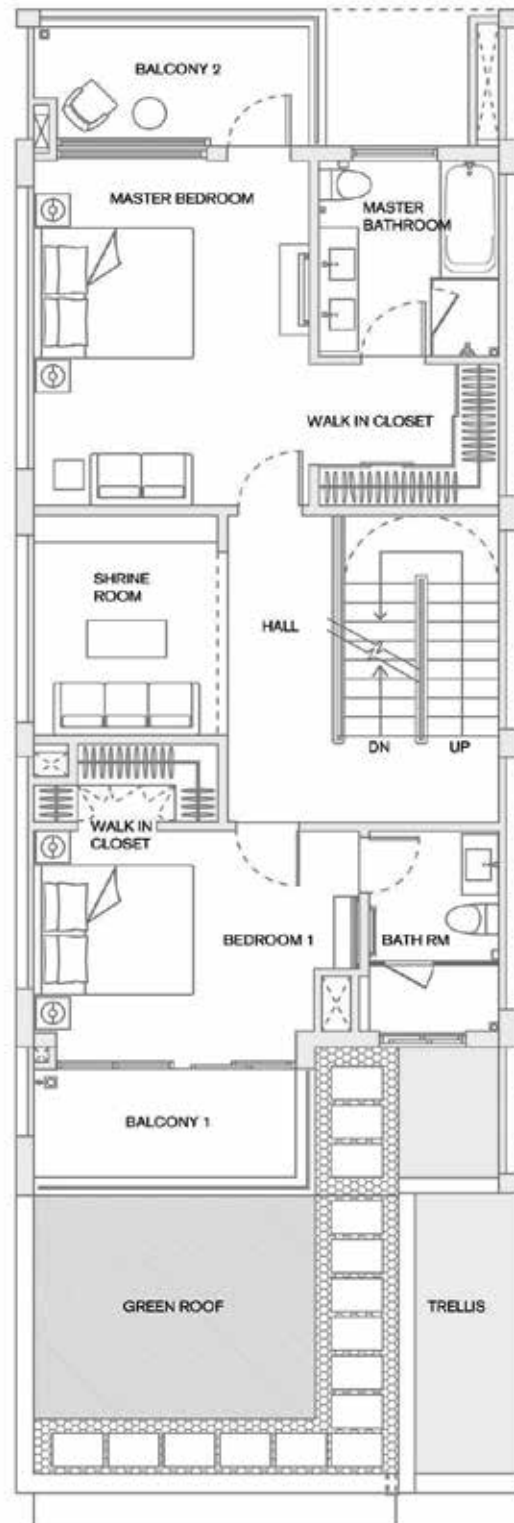
Row Unit - Left

Total Floor Area

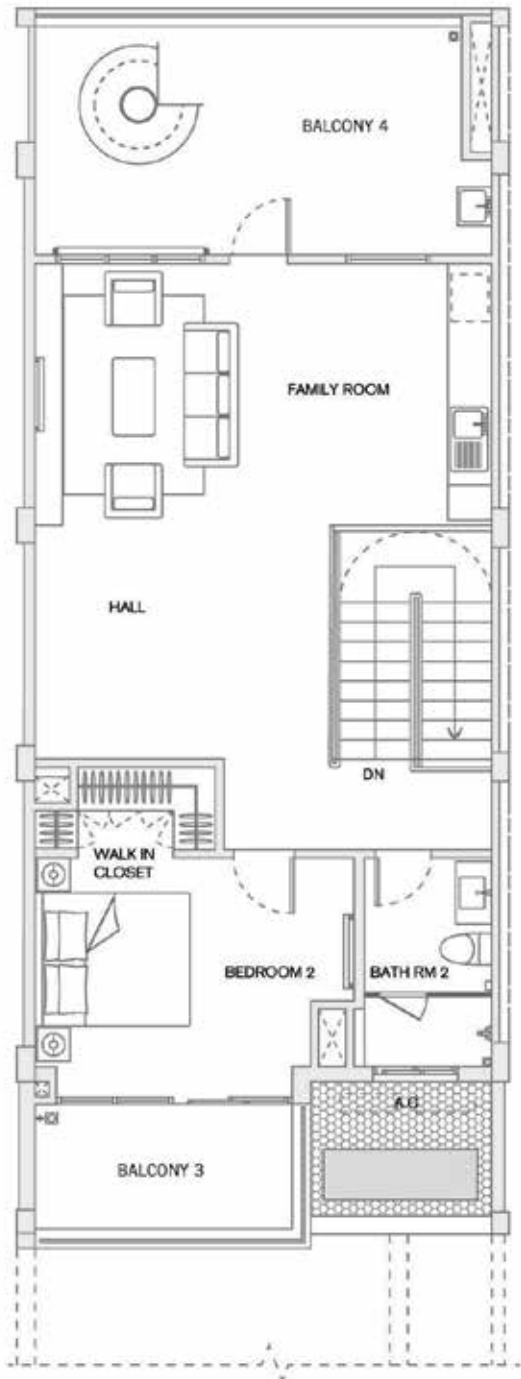
4611 sq ft



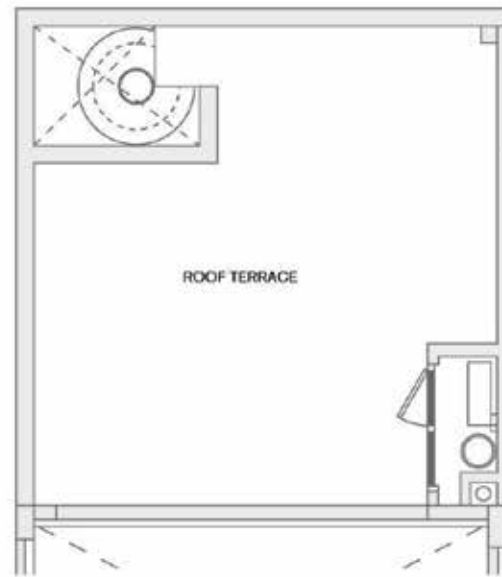
Ground Floor Plan
With Close Kitchen



First Floor Plan



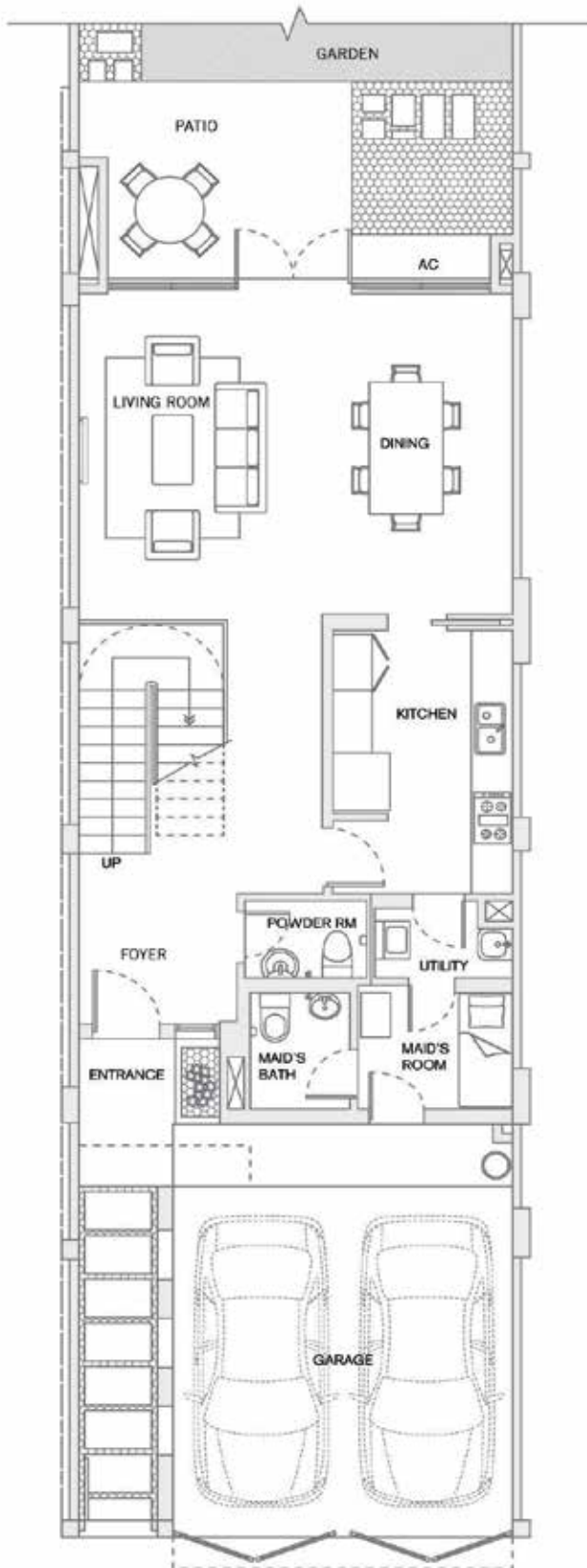
Second Floor Plan



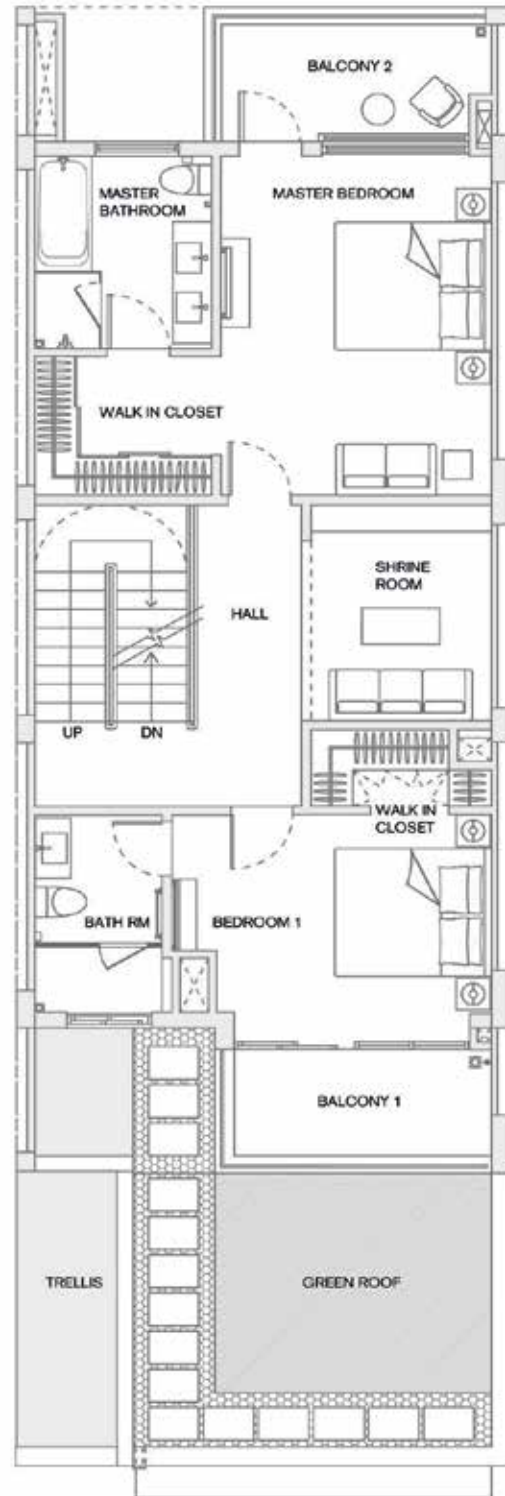
Roof Terrace

Row Unit - Right

Total Floor Area
4611 sq ft



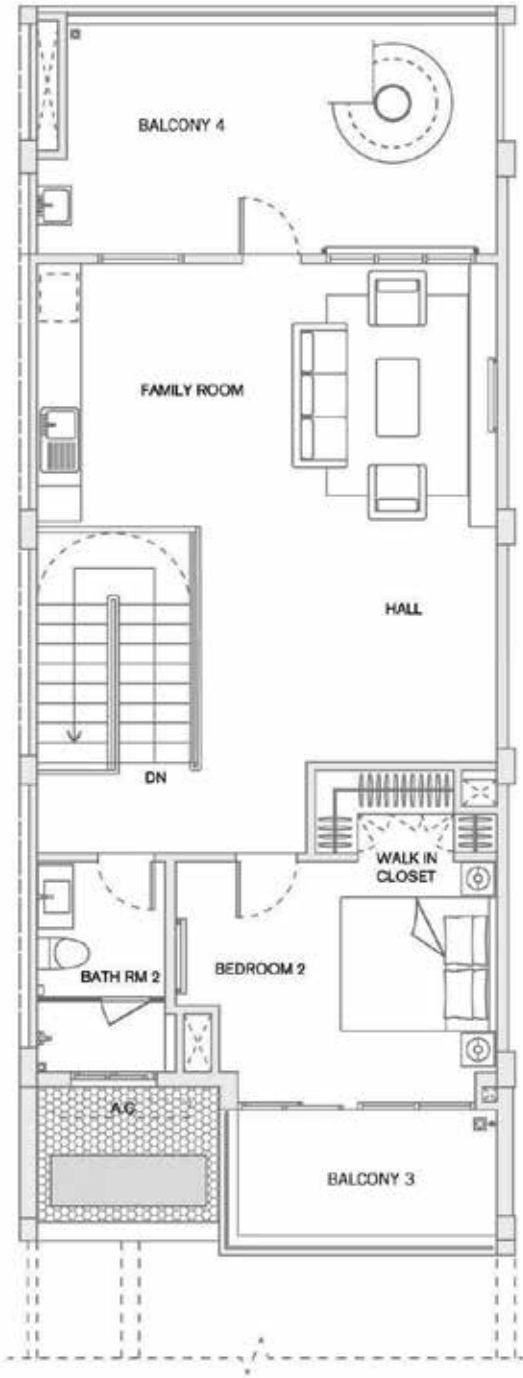
Ground Floor Plan
With Close Kitchen



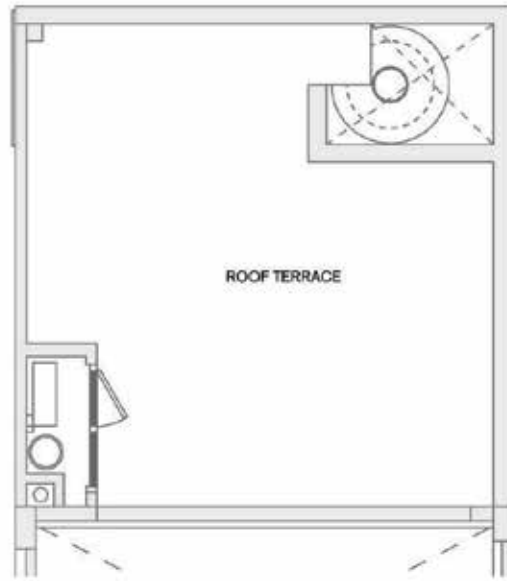
First Floor Plan



LOTUS
HILL



Second Floor Plan



Roof Terrace

*It's time to
take a step up
in life.*





Lotus Hill

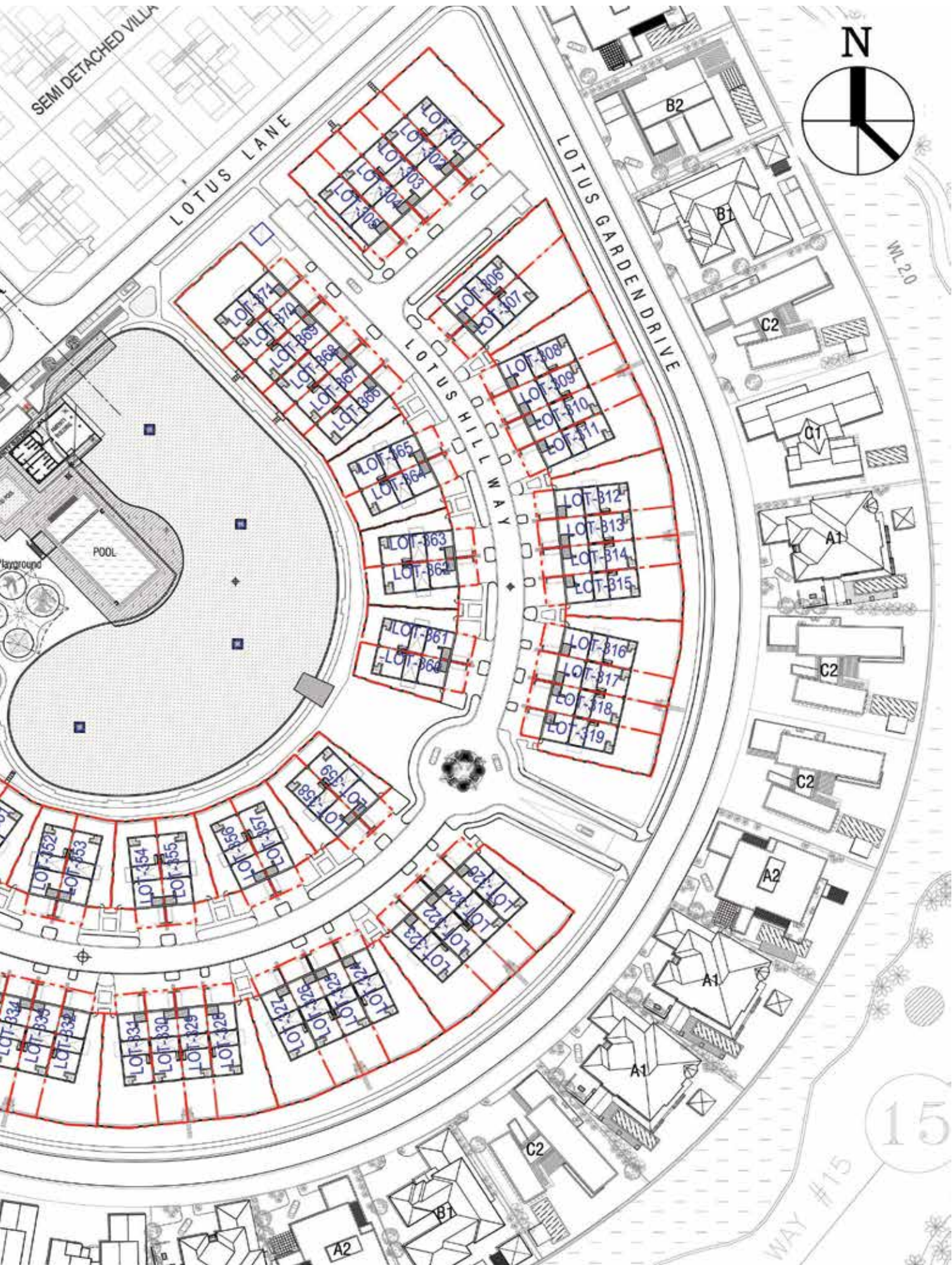




Triplex Villas



Master Plan



DISCLAIMER

All renderings, plans, specifications and area measurements depicted are approximate and are based on current plans and development concepts which are subject to change by the vendor without notice. Materials and finishes depend on availability at the time of construction and may be substituted by the vendor with comparable materials of equal or better quality or value. Completion dates are indicative only. All descriptions are based on the latest information available at printing and the master plan submitted to the relevant authorities. These may be subject to changes in the law and other variations depending on prevailing market conditions.





About Yoma Land

Yoma Land is a leading real estate developer in Myanmar focusing on high quality and sustainable residential, commercial, industrial and hotel developments. Previously known as the real estate division of Yoma Strategic Holdings, this aspirational lifestyle brand has and will continue to transform raw lands into vibrant, culture-rich and sustainable industrial, residential and commercial spaces. Yoma Land is a responsible brand that understands and is committed to delivering innovative real estate solutions for investors and local communities throughout their lives; from first-time homeowners, young families with children and multi-generational living to sheltered homes, international businesses requiring office spaces, warehouses and distribution centres.

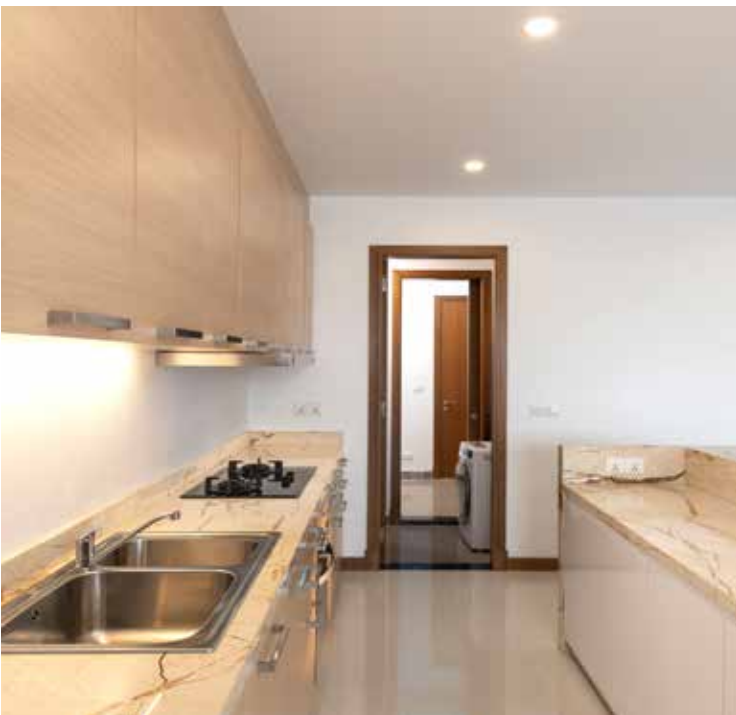
About Yoma Strategic Holdings

Listed on the Main Board of the Singapore Securities Exchange Trading Limited, Yoma Strategic Holdings Ltd., is a leading business corporation with real estate, consumer, automotive, agriculture & logistic and tourism businesses in Myanmar. Together with its Yoma Group partners, Yoma Strategic Holdings is taking a conglomerate approach to build a diversified portfolio of businesses in Myanmar. The Company was ranked in the top 10% of the Governance and Transparency index 2014 and won the Best Managed Board (Silver) Award at the 10th Singapore Corporate Awards in 2015.





UNFURNISHED





LOTUS
HILL

Live High in Pun Hlaing.



Contact:

Pun Hlaing Golf Estate
Hlaing Tharyar Township,
Yangon 11401, Myanmar.

Tel: +95 97 7722 9339

Email: punhlaingrentals@yomaland.com

Website: www.punhlaingestate.com/availability