

SANDAKUU
GARDEN





SURROUNDED BY QUALITY

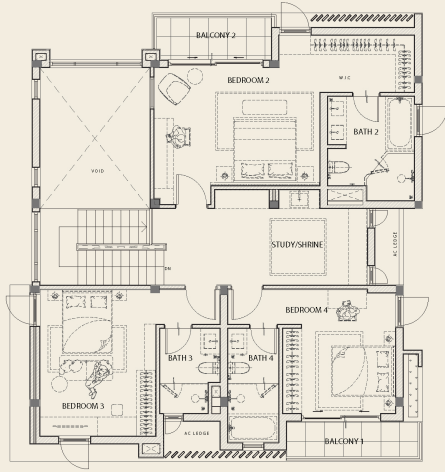
Sandakuu Garden offers a perfect blend of sustainability, luxury and convenience located near the prestigious Pun Hlaing Estate and Pun Hlaing Hospital. Featuring solar-powered homes, spacious plots, and a secure gated community, it redefines eco-conscious living blending seamlessly with modern comforts. Invest in a sustainable greener future with Sandakuu Garden —where innovation meets elegance.

优质品质在周边

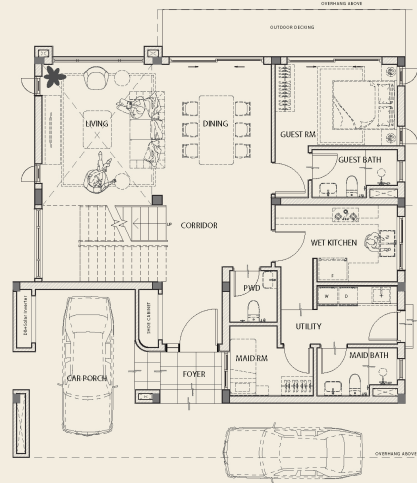
檀香木花园位于潘莱医院和潘莱优质社区附近，完美融合了可持续性，豪华和便利。檀香木花园别墅以太阳能住宅，宽敞的地块和安全的社区为特色，重新定义并无缝融合了环保生活与现代舒适。在檀香木花园投资可持续的绿色未来-创新与优雅的融合。



First Floor



Ground Floor



60' x 60' Plot



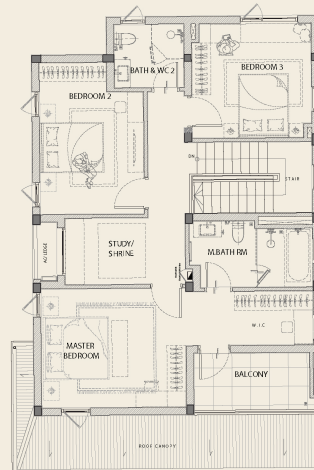
FIRST FLOOR AREA - **1,576 SQ.FT**
 GROUND FLOOR AREA - **1,574 SQ.FT**
 TOTAL FLOOR AREA - **3,150 SQ.FT**

40' x 60' Plot

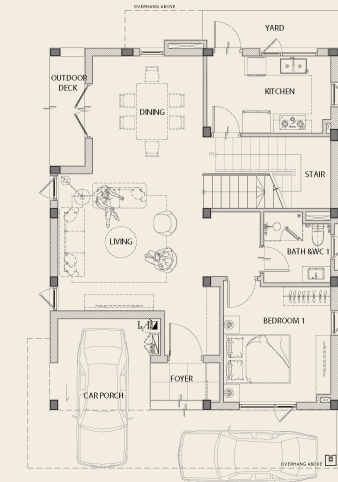


FIRST FLOOR AREA - **1,447 SQ.FT**
 GROUND FLOOR AREA - **1,203 SQ.FT**
 TOTAL FLOOR AREA - **2,650 SQ.FT**

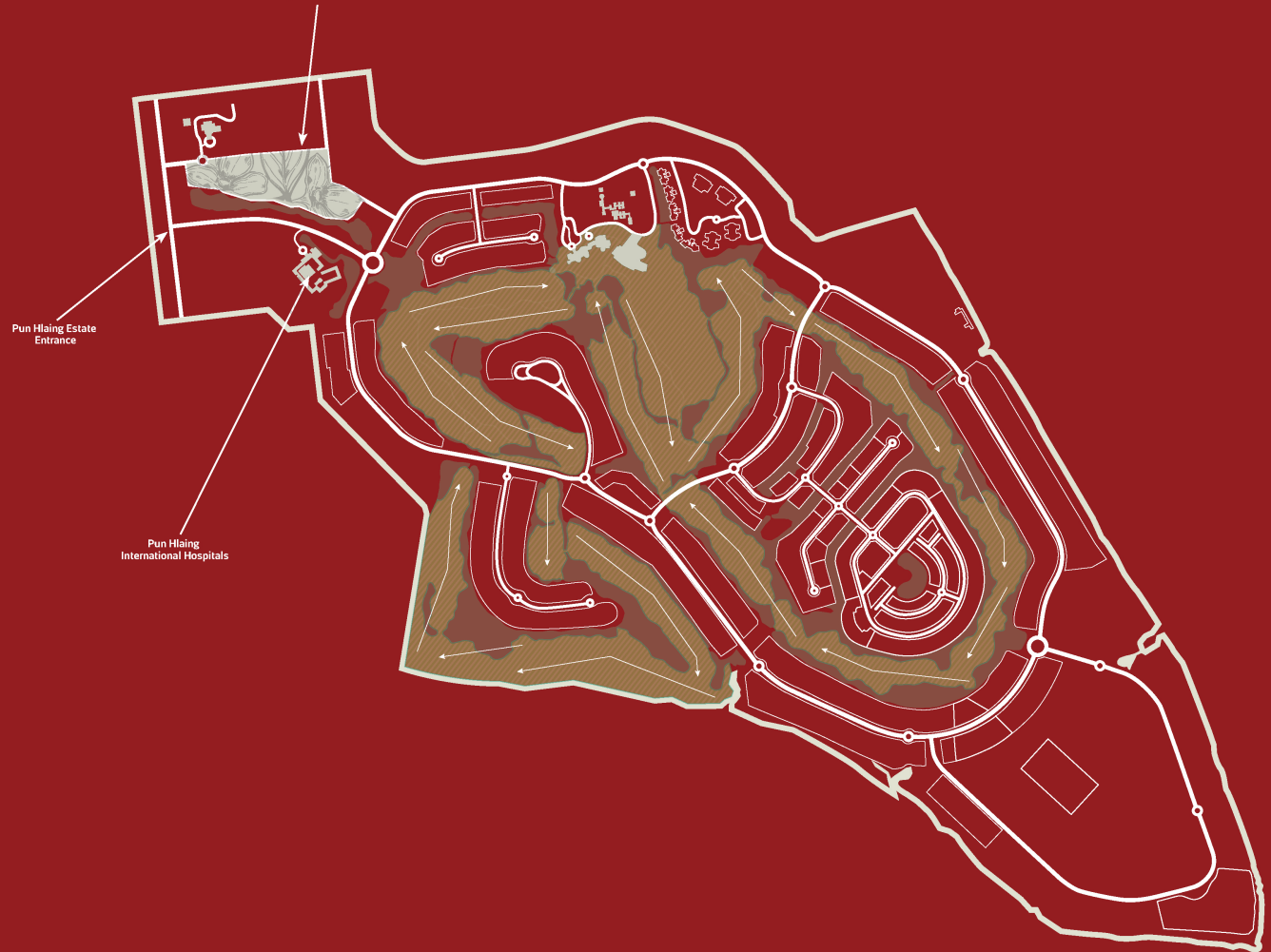
First Floor



Ground Floor



**SANDAKUU
GARDEN**



**SANDAKUU
GARDEN**

**PUN HLAING ESTATE SALES GALLERY
CLUB HOUSE, PUN HLAING ESTATE AVENUE,
HLAING THARYAR TOWNSHIP, YANGON.**

09 777 229 449 | sales@yomaland.com

Another quality project of

