

 ^{kun}
vela



A Lifestyle Within Reach

Living at Kun Vela means more than owning a villa—it's about becoming part of StarCity Estate. With world-class amenities, international schools, lush open spaces, and vibrant community life, every day offers a seamless blend of convenience and leisure.

TOTAL
20.6
ACRES

TOTAL
110
VILLAS

Luxury Villas, Thoughtfully Crafted

Each villa at Kun Vela is more than a home—it is a statement of refined living. Expansive interiors, natural light, and elegant finishes create a harmonious balance between sophistication and comfort. Every detail is meticulously designed to elevate your lifestyle.

**kun
vela**

34
VILLAS



Disclaimer - All illustrations and photographs contained in this brochure are the artist's impression only. The Developer reserves the right to modify any part or parts of the project or the building as directed or approved by the architects and/or the relevant authorities. All plans, layout, information and specifications are subject to change without notification and cannot form part of an offer or contract.



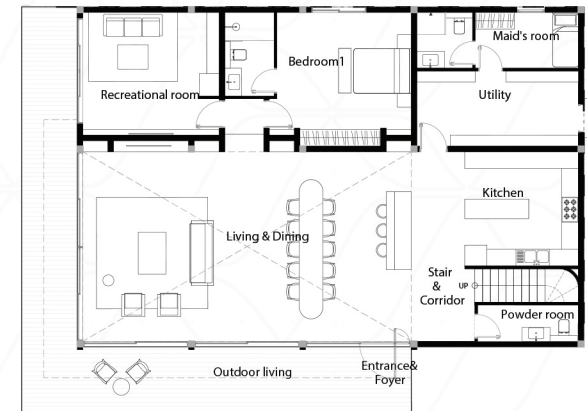
FIRST FLOOR PLAN

FLOOR AREA 2,080 SQ.FT



GROUND FLOOR PLAN

FLOOR AREA 3,080 SQ.FT



A^{khun} Vela



Kyaik Khauk Pagoda Road, Thanlyin Township, Yangon.
09 777 22 33 55, 09 777 22 33 66, 09 777 22 33 77
sales@yomaland.com





 ^hun
tara



A Lifestyle Within Reach

Living at Kun Tara means more than owning a villa—it's about becoming part of StarCity Estate. With world-class amenities, international schools, lush open spaces, and vibrant community life, every day offers a seamless blend of convenience and leisure.

TOTAL
20.6
ACRES

TOTAL
110
VILLAS

Luxury Villas, Thoughtfully Crafted

Each villa at Kun Tara is more than a home—it is a statement of refined living. Expansive interiors, natural light, and elegant finishes create a harmonious balance between sophistication and comfort. Every detail is meticulously designed to elevate your lifestyle.

kun
tara

66
VILLAS



Disclaimer - All illustrations and photographs contained in this brochure are the artist's impression only. The Developer reserves the right to modify any part or parts of the project or the building as directed or approved by the architects and/or the relevant authorities. All plans, layout, information and specifications are subject to change without notification and cannot form part of an offer or contract.



The Hangar

The Hangar wet market and Food Court is one of a kind in Myanmar where wide range of fresh produces are featured alongside a traditional style tea shop. Get your daily groceries and sit down for a traditional Myanmar breakfast at the Hangar before starting your day.

River Park

The mesmerizing river park in StarCity sits just behind Flood Gate 1. Have your evening walks at the River park, enjoying the sunset looking over the Bago River. The best time to be there is from 4 PM to 6 PM. There are also 3 BBQ pits free to use for all residents.



StarCity Sports Club

StarCity Sports Club is Myanmar's First indoor and outdoor multi-sports complex. It has 45,000 square meter modern Sports facilities including more than 10 indoor and outdoor sporting arenas. Exploring new ways of spending time together, Star City Sports Club was founded to promote, organize, and coordinate sports, social and other recreational activities for creating memories that last a lifetime.

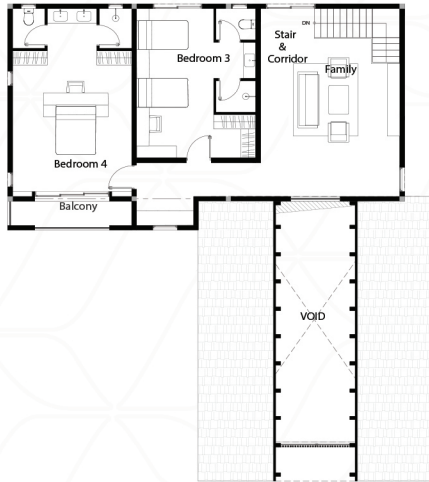
EV Station

Electric Vehicle charging stations are at the forefront of a transportation revolution. Not only does StarCity promote healthy living, but the facility also offers an environmentally friendly lifestyle needs. EV charging stations are in the Galaxy's underground car park offering cleaner and more sustainable mobility choices for all.



VEGGIE FARM

Discover the Freshest, Healthiest and the most sustainable Veggies in Town! Pun Hlaing and StarCity Veggie farms use the highest standards of farming, prioritizing the health and safety of both our consumers and the land we grow our veggies on. From seeds to harvest, our methods are guided by sustainable practices (GAP) also known as Good Agricultural Practices that minimize environmental impact.



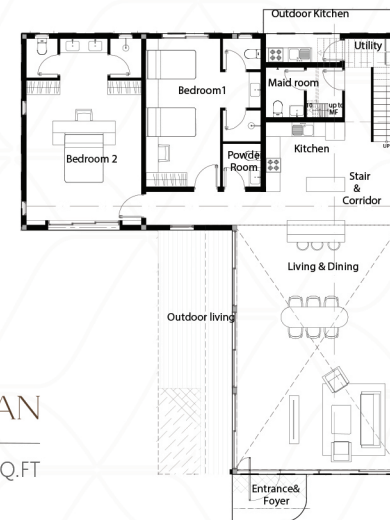
FIRST FLOOR PLAN

FLOOR AREA 1,464 SQ.FT



GROUND FLOOR PLAN

FLOOR AREA 2,616 SQ.FT



MEZZANINE FLOOR 43 SQ.FT



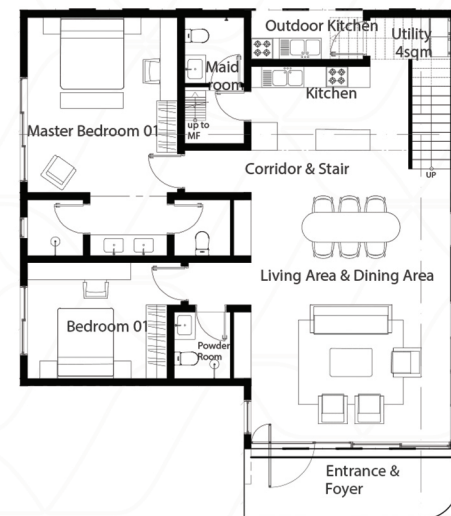
FIRST FLOOR PLAN

FLOOR AREA 1,453 SQ.FT



GROUND FLOOR PLAN

FLOOR AREA 1,765 SQ.FT





Disclaimer - All illustrations and photographs contained in this brochure are the artist's impression only. The Developer reserves the right to modify any part or parts of the project or the building as directed or approved by the architects and/or the relevant authorities. All plans, layout, information and specifications are subject to change without notification and cannot form part of an offer or contract.



LIVE GRACEFULLY, LIVE FULLY

From the warmth of natural wood finishes to the seamless indoor-outdoor connection, Kun Tara offers a lifestyle defined by sophistication and comfort. Thoughtfully designed interiors blend minimalism with timeless charm, creating the perfect canvas for modern living.

Step into a world where luxury feels effortless. Whether you're hosting gatherings in the spacious living area, enjoying the lush green surroundings, or retreating into your private haven, Kun Tara Villas promise a life of balance and beauty.



h^{un} tara



Kyaik Khauk Pagoda Road, Thanlyin Township, Yangon.
09 777 22 33 55, 09 777 22 33 66, 09 777 22 33 77
sales@yomaland.com

