



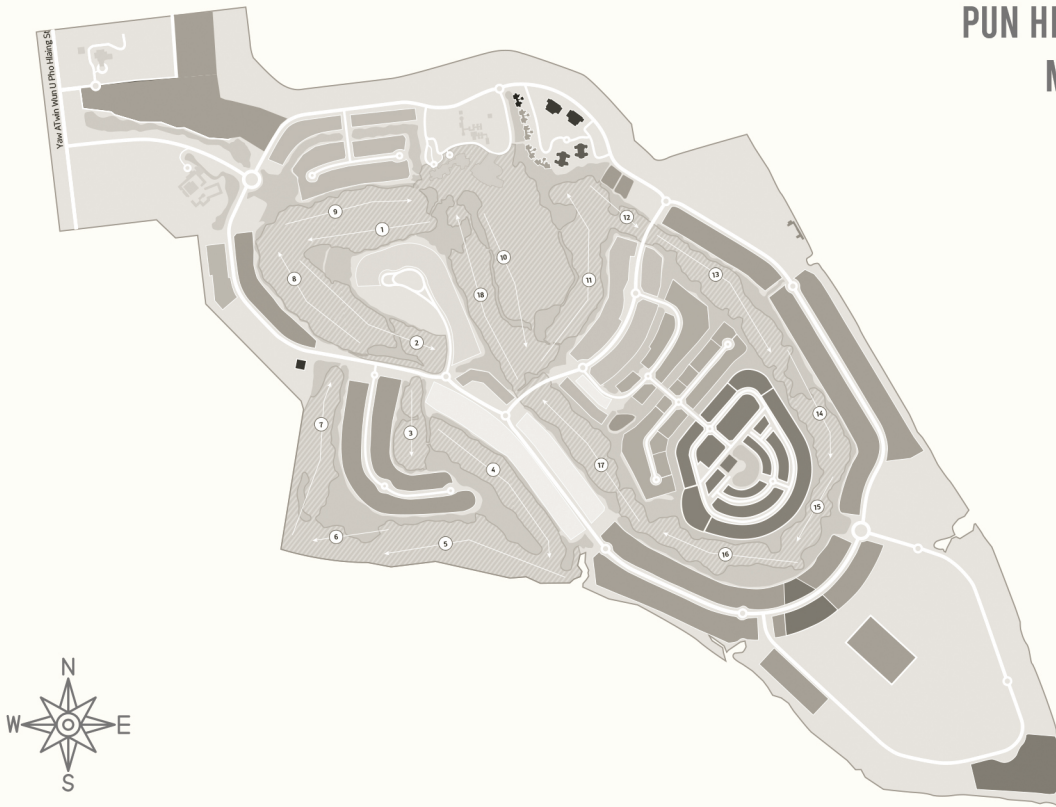
WISTERIA

villas

Where Nature Whispers, and Luxury Listens.

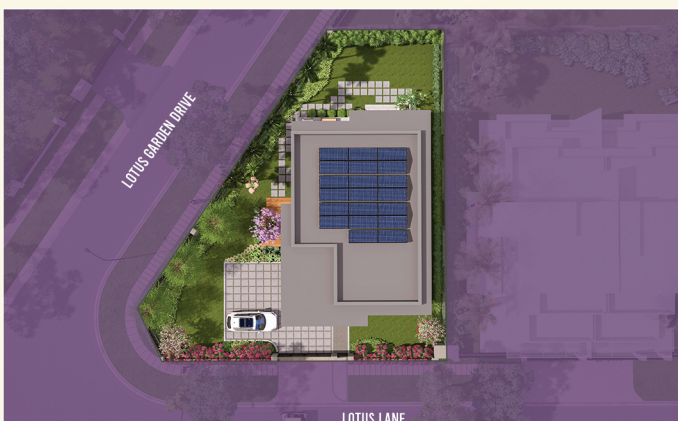


PUN HLAING ESTATE MASTER PLAN



WISTERIA-TYPE 1

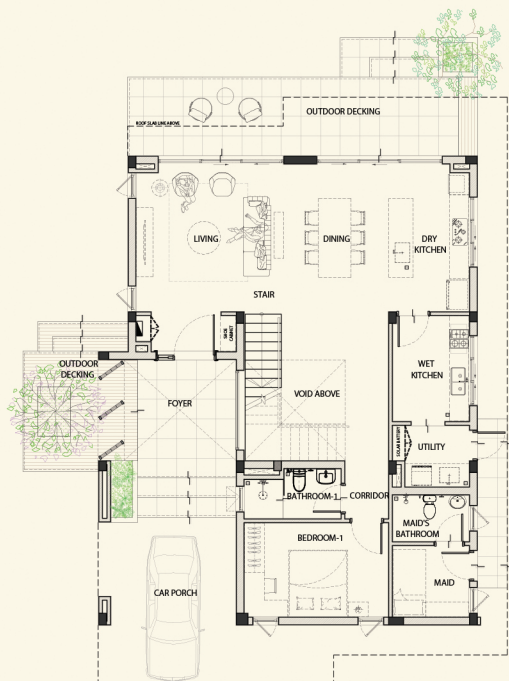
*EARTHY BY DESIGN.
EXCLUSIVE BY NATURE.*



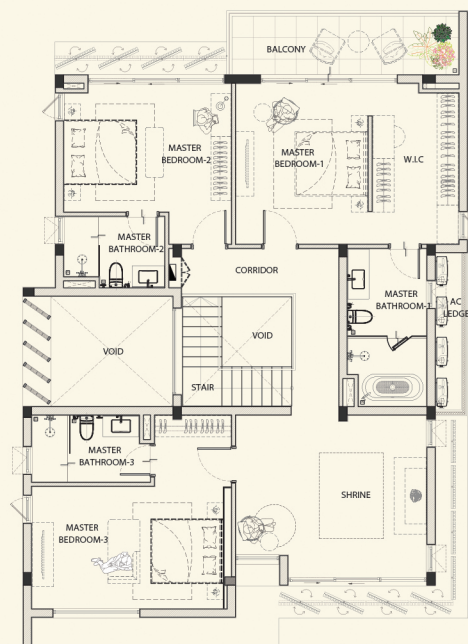
Disclaimer - All illustrations, renderings and photographs contained in this brochure are the artist's impression only. The Developer reserves the right to modify any part or parts of the project or the building as directed or approved by the architects and/or the relevant authorities. All plans, layout, information and specifications are subject to change without notification and cannot form part of an offer or contract.

WISTERIA-TYPE 1

GROUND FLOOR
2,229 SQ-FT



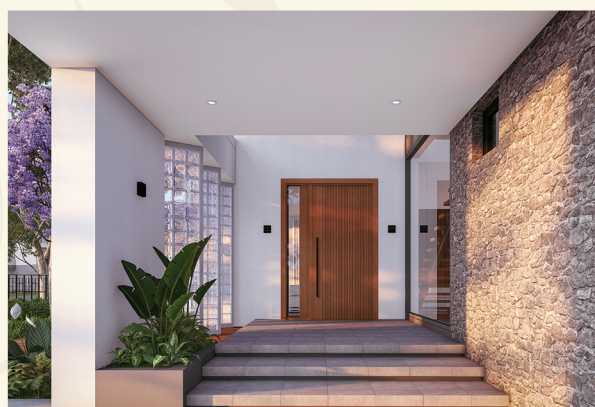
FIRST FLOOR
2,236 SQ-FT

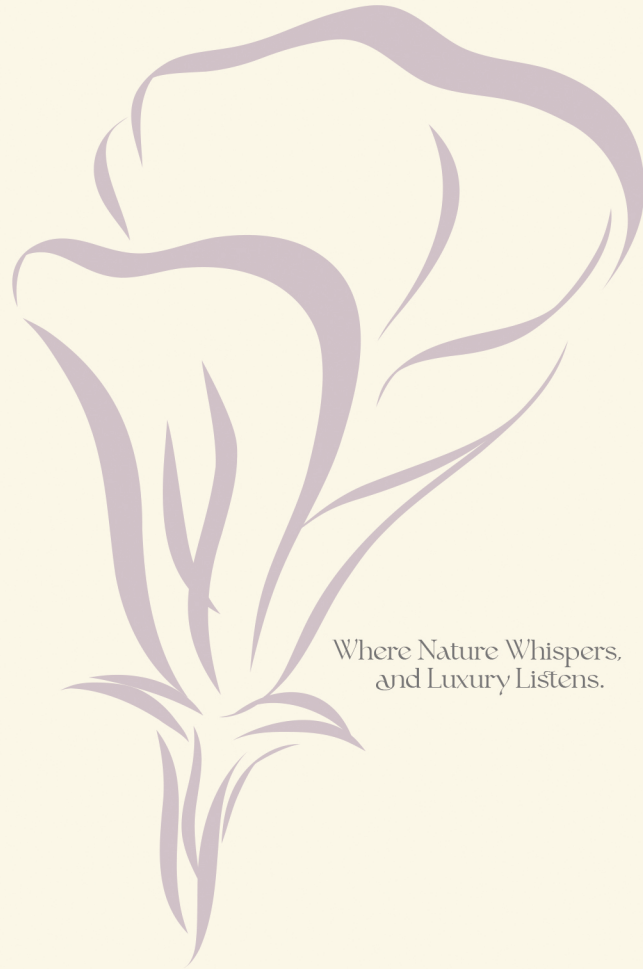


TOTAL FLOOR AREA
4,465 SQ-FT



PRIVACY DEFINED BY DESIGN.



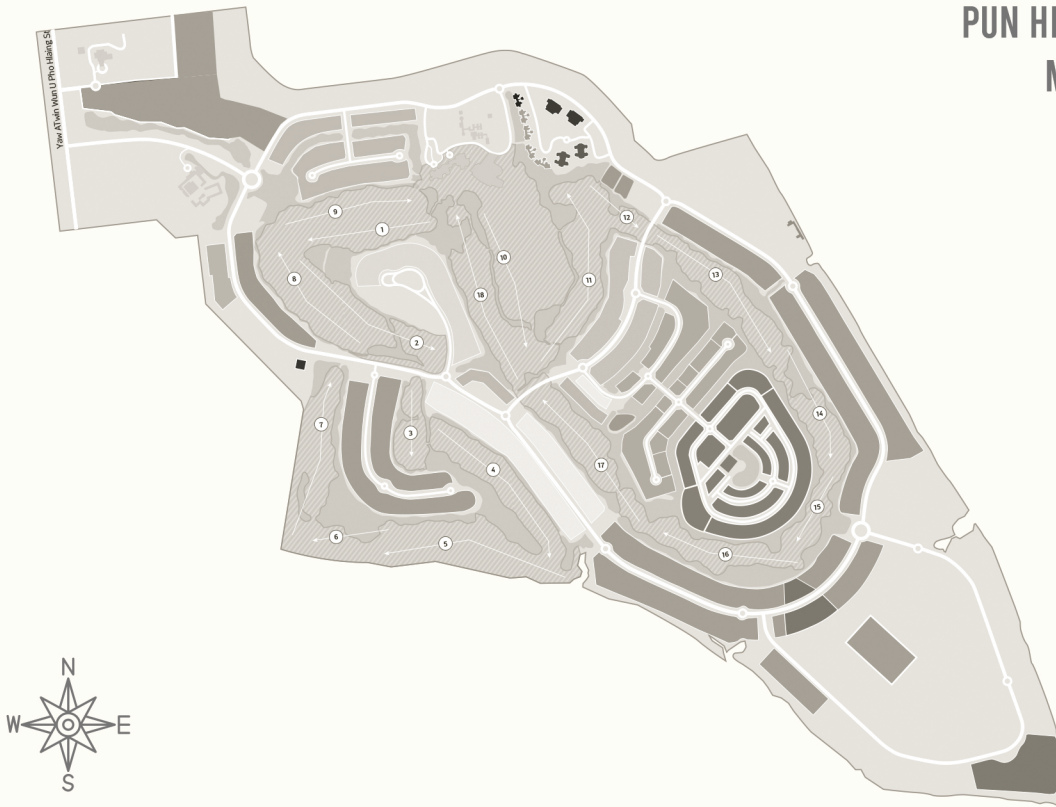


Where Nature Whispers,
and Luxury Listens.



PUN HLAING ESTATE SALES GALLERY
CLUB HOUSE, PUN HLAING ESTATE AVENUE,
HLAING THARYAR TOWNSHIP, YANGON.
09 777 229 449 | SALES@YOMALAND.COM

PUN HLAING ESTATE MASTER PLAN



WISTERIA-TYPE 2

*EARTHY BY DESIGN.
EXCLUSIVE BY NATURE.*



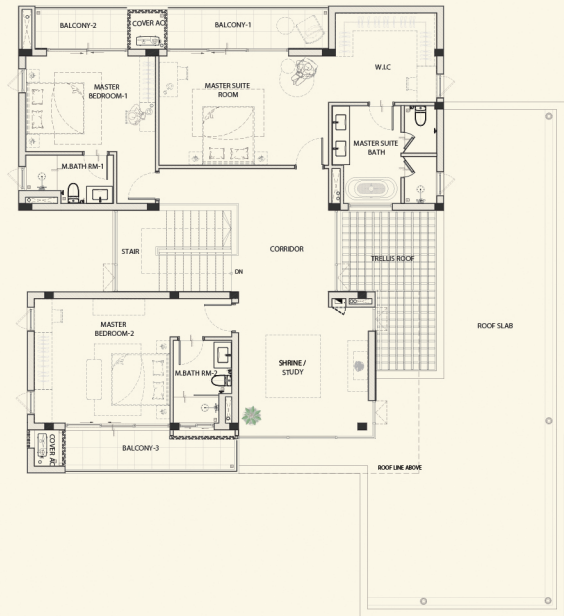
Disclaimer - All illustrations, renderings and photographs contained in this brochure are the artist's impression only. The Developer reserves the right to modify any part or parts of the project or the building as directed or approved by the architects and/or the relevant authorities. All plans, layout, information and specifications are subject to change without notification and cannot form part of an offer or contract.

WISTERIA-TYPE 2

GROUND FLOOR
3,165 SQ-FT



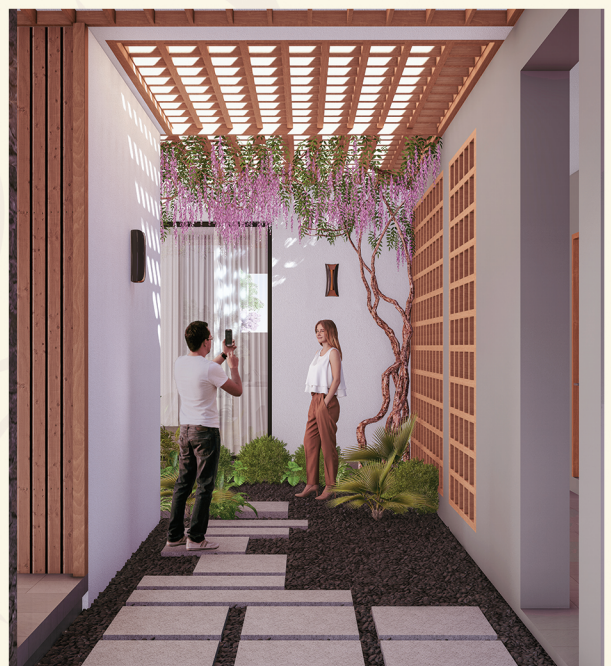
FIRST FLOOR
3,460 SQ-FT



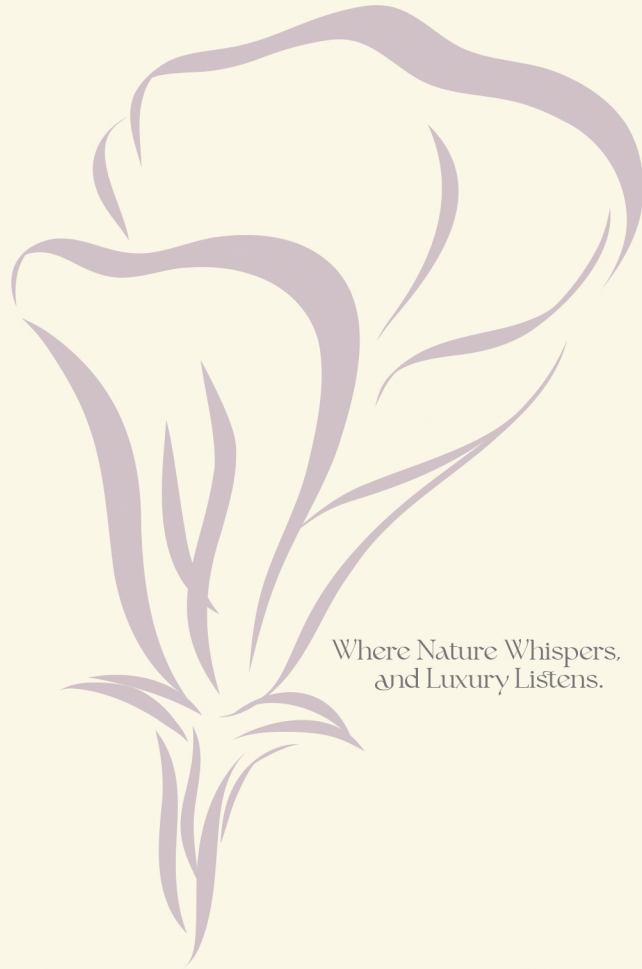
TOTAL FLOOR AREA
6,625 SQ-FT



PRIVACY DEFINED BY DESIGN.



Disclaimer - All illustrations, renderings and photographs contained in this brochure are the artist's impression only. The Developer reserves the right to modify any part or parts of the project or the building as directed or approved by the architects and/or the relevant authorities. All plans, layout, information and specifications are subject to change without notification and cannot form part of an offer or contract.

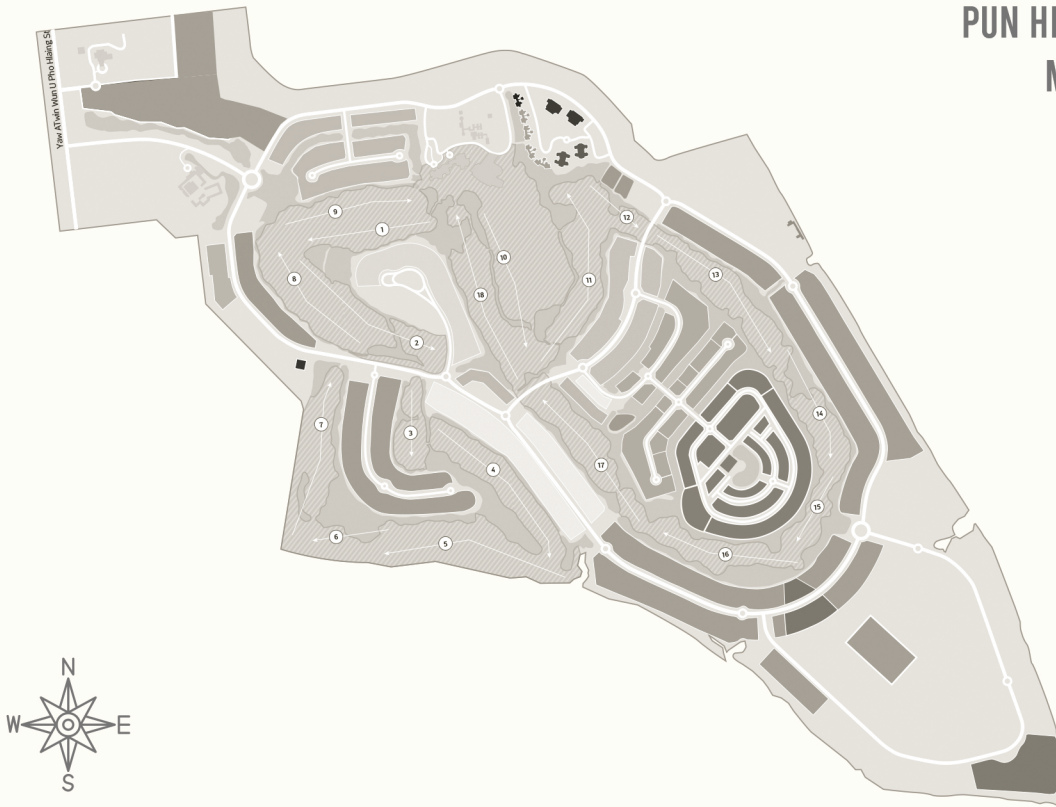


Where Nature Whispers,
and Luxury Listens.



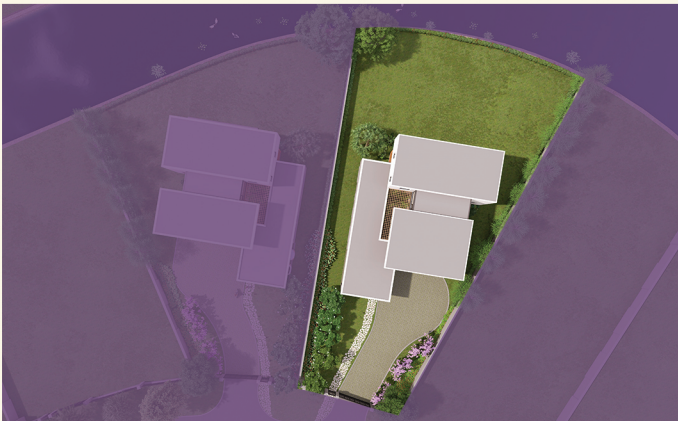
PUN HLAING ESTATE SALES GALLERY
CLUB HOUSE, PUN HLAING ESTATE AVENUE,
HLAING THARYAR TOWNSHIP, YANGON.
09 777 229 449 | SALES@YOMALAND.COM

PUN HLAING ESTATE MASTER PLAN



WISTERIA-TYPE 3

*EARTHY BY DESIGN.
EXCLUSIVE BY NATURE.*



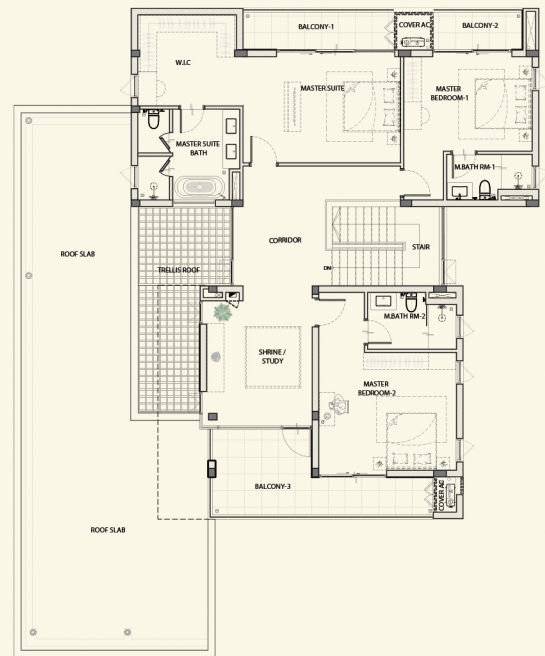
Disclaimer - All illustrations, renderings and photographs contained in this brochure are the artist's impression only. The Developer reserves the right to modify any part or parts of the project or the building as directed or approved by the architects and/or the relevant authorities. All plans, layout, information and specifications are subject to change without notification and cannot form part of an offer or contract.

WISTERIA-TYPE 3

GROUND FLOOR 3,285 SQ-FT



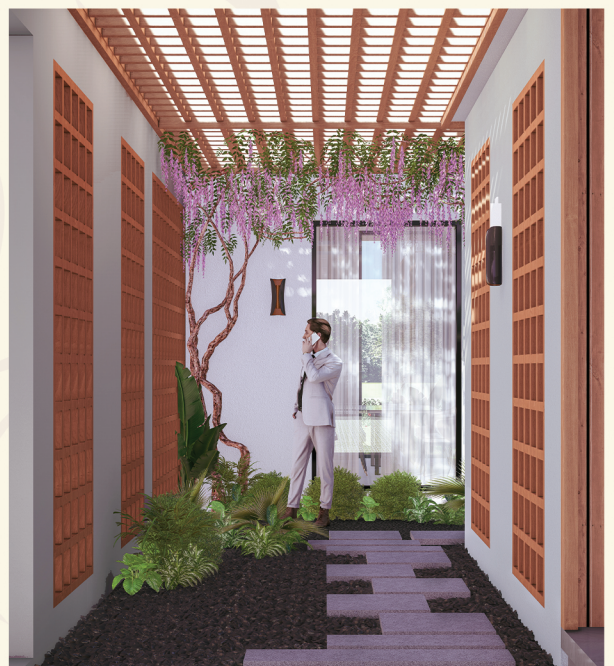
FIRST FLOOR 3,615 SQ-FT

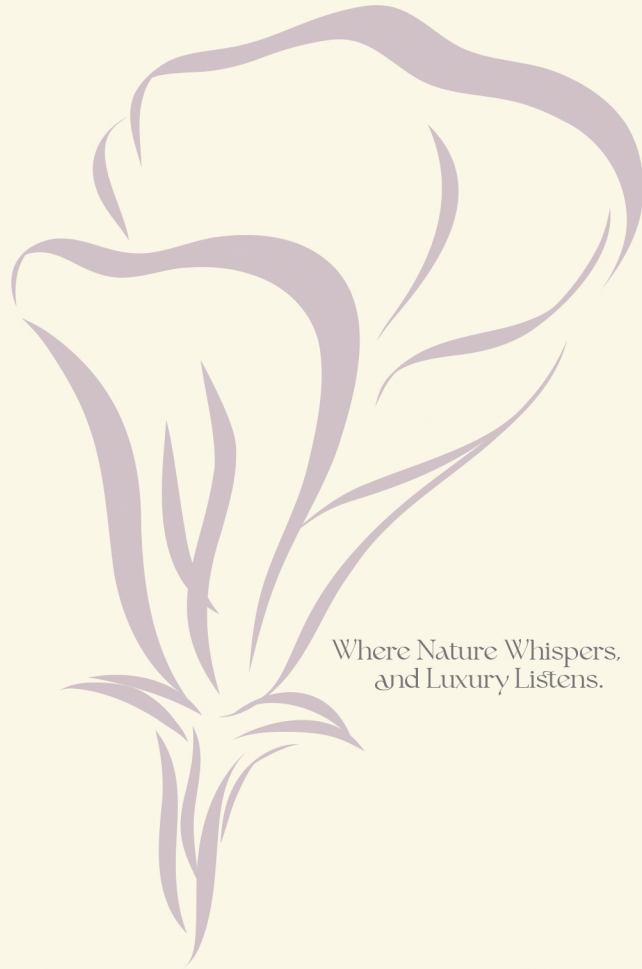


TOTAL FLOOR AREA 6,900 SQ-FT



PRIVACY DEFINED BY DESIGN.





Where Nature Whispers,
and Luxury Listens.



PUN HLAING ESTATE SALES GALLERY
CLUB HOUSE, PUN HLAING ESTATE AVENUE,
HLAING THARYAR TOWNSHIP, YANGON.
09 777 229 449 | SALES@YOMALAND.COM